

# The Dawn Dallas Divide Photo Shoot

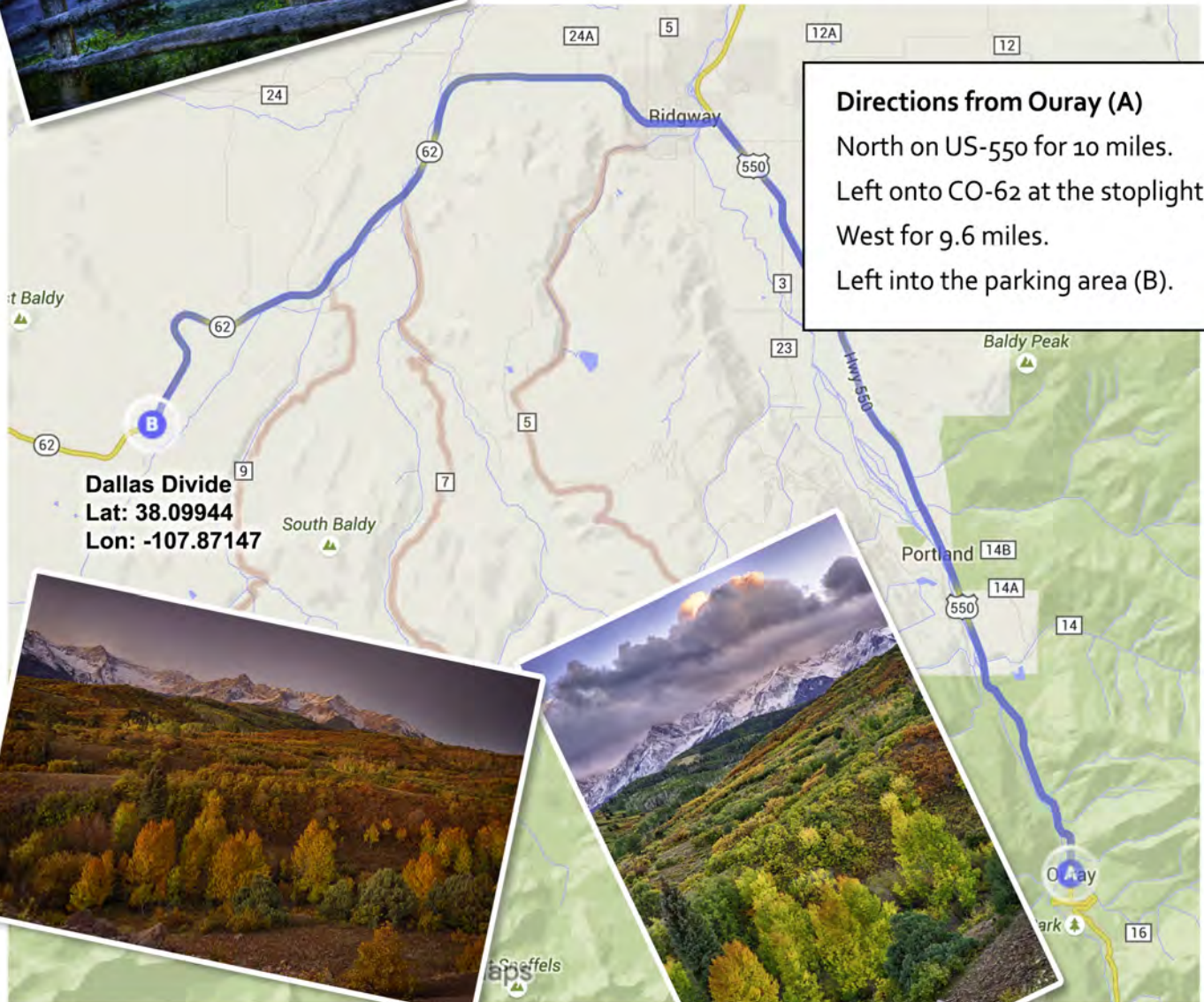
**Departs: 6:00 AM** Thursday, 24 September 2015, front of hotel

The Dallas Divide is a viewpoint along Colorado Highway 62 west of Ridgeway. It provides a vista of the aspen and oak forest down to the Sneffels Wilderness area. In leaf-color season, especially at sunrise and sunset, it is spectacular.



## Directions from Ouray (A)

North on US-550 for 10 miles.  
Left onto CO-62 at the stoplight.  
West for 9.6 miles.  
Left into the parking area (B).



## Bring along:

Head lamp or flashlight.  
Camera.  
Mid-range zoom lens.  
Wide-angle lens.  
Tripod.  
Remote release.

## Suggested photographs

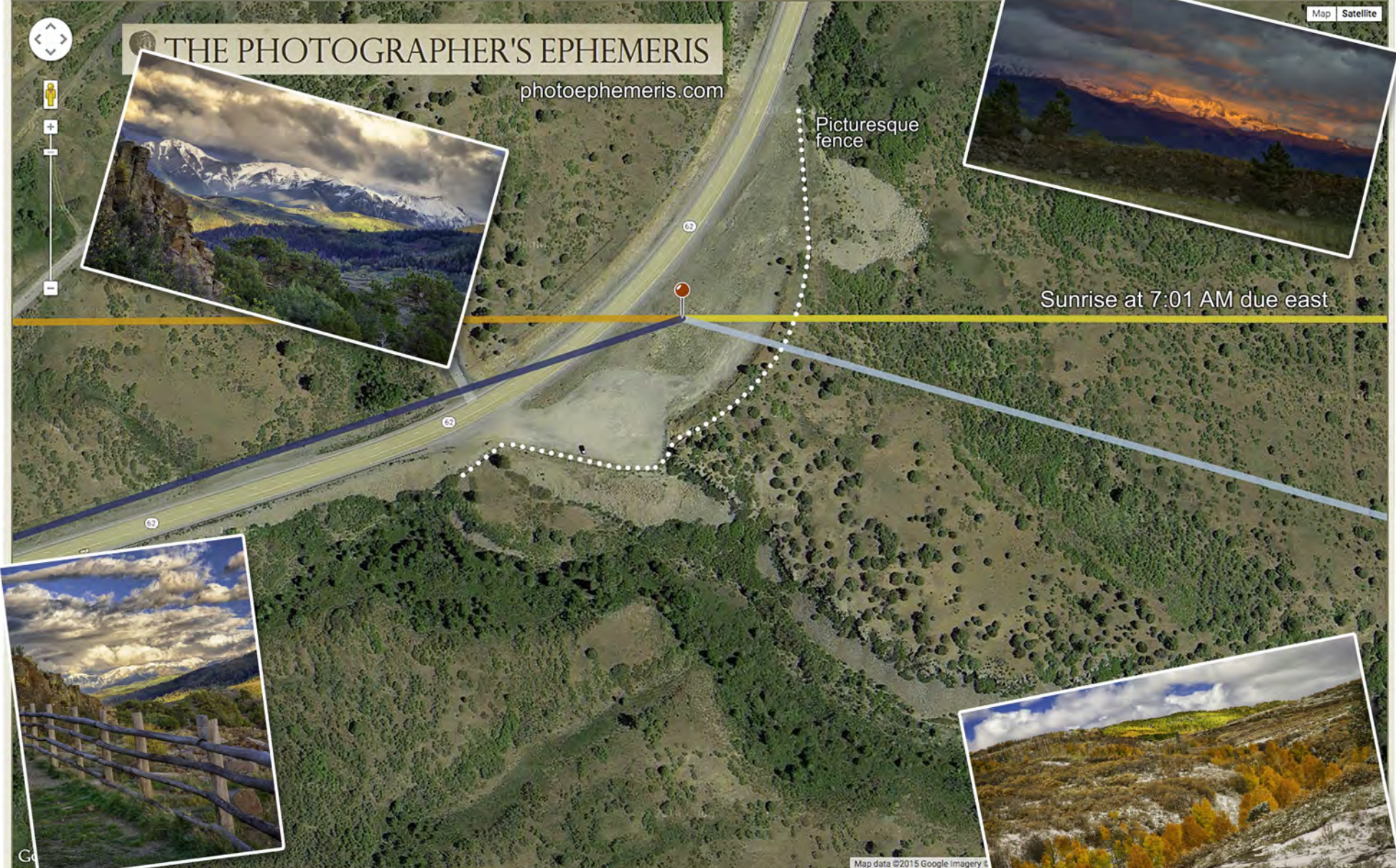
Through fence toward rising sun.  
First light on the Sneffels range.  
Sun skimming leaves of aspen and oak.  
Mountains to the east.  
Road cut across the road.  
Trees in the ravine just over the fence.

# THE PHOTOGRAPHER'S EPHEMERIS

photoephemeris.com

Picturesque fence

Sunrise at 7:01 AM due east



Map data ©2015 Google Imagery

Moonset ↓ 02:54 251.9° Waxing gibbous 80.6%	Astro start 05:32 75.8°	Nautical start 06:03 81.0°	Civil start 06:34 85.9°	Sunrise ↑ 07:01 90.0°	Moonrise ↑ 16:52 105.8° Waxing gibbous 85.7%	Sunset ↓ 19:04 269.7°	Civil end 19:31 273.9°	Nautical end 20:02 278.7°	Astro end 20:33 283.8°
---------------------------------------------------------	-------------------------------	----------------------------------	-------------------------------	-----------------------------	----------------------------------------------------------	-----------------------------	------------------------------	---------------------------------	------------------------------